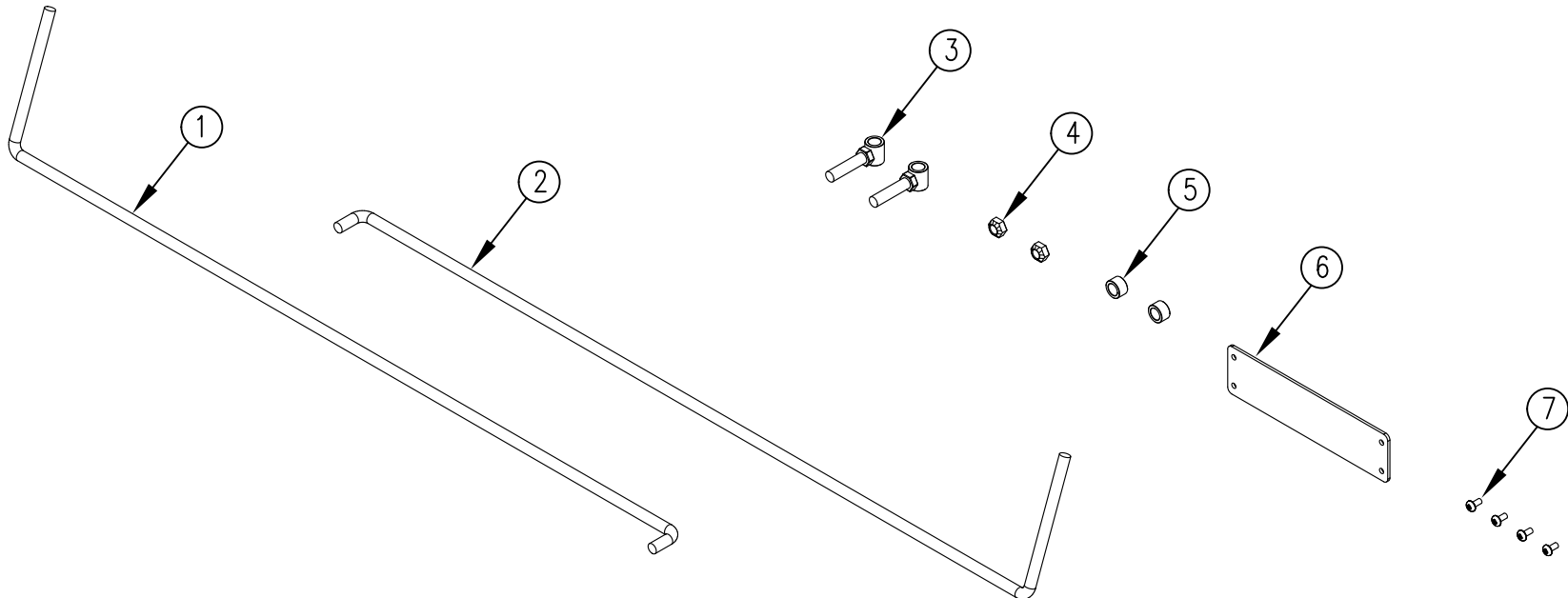


ITEM NO.	QTY.	PART NO.	DESCRIPTION
1	1	011615	DRIVER SIDE FLIPPER SPRING (TUCKUNDER)
2	1	011614	CURB SIDE FLIPPER SPRING (TUCKUNDER)
3	2	013039	TORSION SPRING SWIVEL WELDMENT
4	2	000588	1/2-13 CROWN LOCK NUT
5	2	013040	TORSION SPRING SWIVEL SPACER
6	1	011575	10GA.X2.50X9.75" SPRING COVER PLATE (TUCKUNDER)
7	4	000620	1/4-20x1/2" PN HD TY FS
8	1	095154	REPAIR TKT TP FLIPPER TORSION SPRING INSTRUCTIONS



						THIRD ANGLE PROJECTION	FILENAME:	WOODBINE MFG. CO. BUS BROWN DRIVE WOODBINE, IOWA 51579				
							SYMBOLY PER ANSI Y14.5	NOTES:				
						DECIMAL 2PLC 3PLC	DRAWN BY:	712-647-2050				
						MACHINE SAW, DRILL .030 .015	JCB					
B	12/2/14	ADDED (1) 95154	GDB	1263		SHEAR, PUNCH FORM .060 .030	DRAWN/DATE	THE INFORMATION HERE IS CONFIDENTIAL AND MUST NOT BE USED IN ANYWAY DETRIMENTAL TO THE INTEREST OF WOODBINE MFG.				
A	5/23/14	RELEASED TO PRODUCTION	JCB	1075		TORCH, WELDING ROUGH CAST .090 .060	5/23/14	REPL. 60" STL. FLIPPER TORSION SPRING KIT (TKT)				
REV.	DATE	CHANGE RECORD	BY	APPVD	ECN	DRAFT 2"	ANGULAR ±1°	SALES CATEGORY	PRODUCT LINE	SCALE 1:8	FIN. WT.	PART NO. 12954