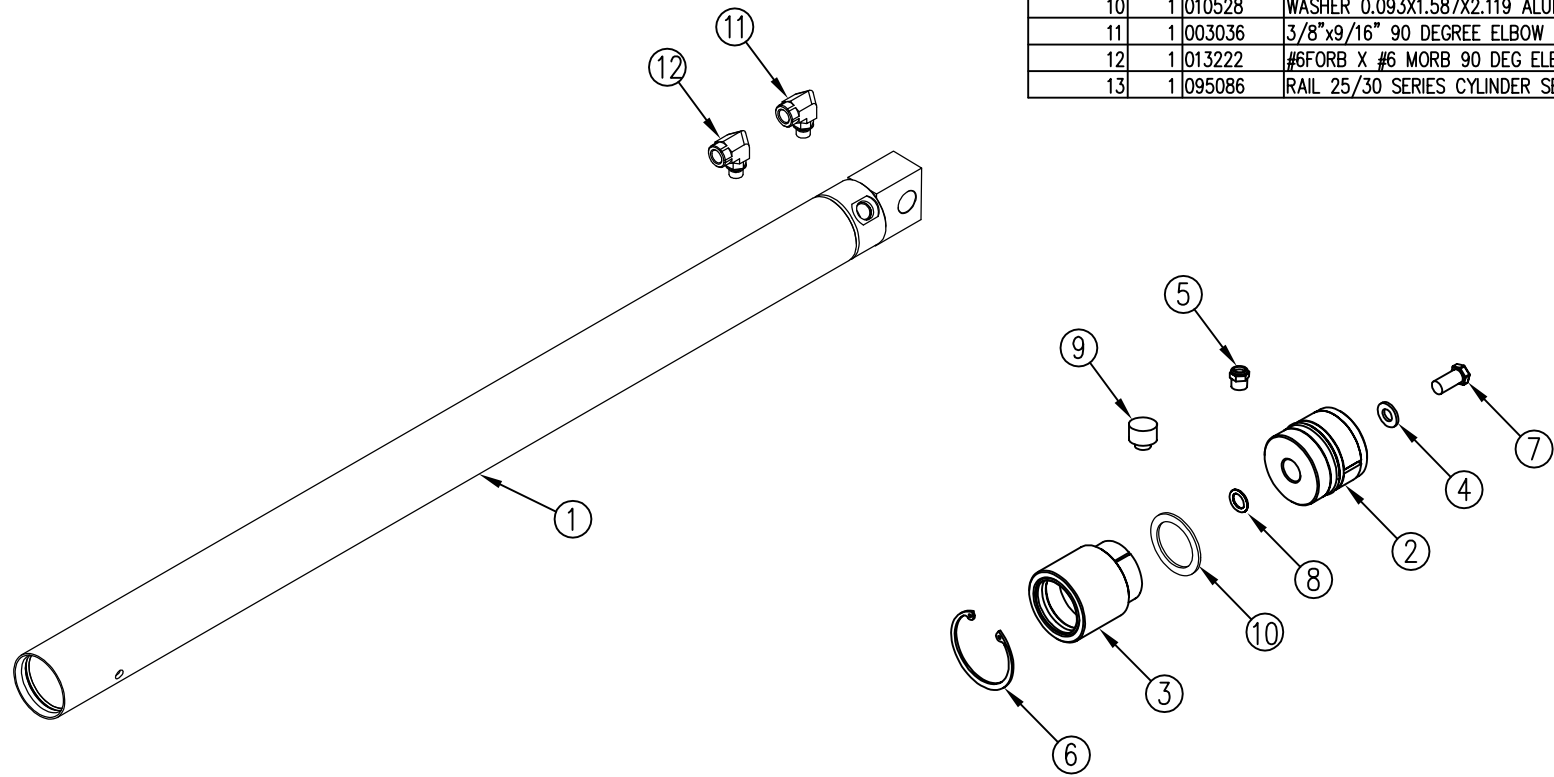


ITEM NO.	QTY.	PART NO.	DESCRIPTION
1	1	010433	2"X35" CYL TUBE WLDMT
2	1	007444	1.980" PISTON W/ U-CUP & WEAR RING(RAIL)
3	1	010428	GUIDE BUSHING ASSEMBLY 2.13
4	1	000599	5/16 SAE THRU HARD WASHER
5	1	000600	VENT PLUG (RAIL G2)
6	1	010437	2.125" INTERNAL SNAP RING (N5000-212)
7	1	000586	5/16-18X3/4" HHCS GR5
8	1	004556	5/8 O-RING 2-111
9	1	013675	CYLINDER PORT ASSEMBLY PLUG(RAIL) 25/30
10	1	010528	WASHER 0.093X1.587X2.119 ALUM
11	1	003036	3/8"x9/16" 90 DEGREE ELBOW
12	1	013222	#6FORB X #6 MORB 90 DEG ELBOW (SAE 68150606FRG)
13	1	095086	RAIL 25/30 SERIES CYLINDER SEAL REPLACEMENT INST.



REV.	DATE	CHANGE RECORD	BY	APPVD	ECN	DRAFT	ANGULAR	SCALE	FIN. WT.	PART NO.
C	3/21/14	CHANGED PN1108 TO PN13675	MTC		1083	2"	±1°	1:6		11788
B	11/13/13	003036 WAS 003035, ADDED (1) 013222	GDB		1004					
A	10/17/11	RELEASED TO PRODUCTION	JAR		529					
						THIRD ANGLE PROJECTION	FILENAME:		WOODBINE MFG. CO.	
							SYMBOLGY PER ANSI Y14.5		BUS BROWN DRIVE	
						DECIMAL	2PLC	3PLC	NOTES:	
						MACHINE SAW, DRILL	.030	.015	712-647-2050	
						SHEAR, PUNCH FORM	.060	.030	The original TOMMY GATE hydraulic bit	
						TORCH, WELDING ROUGH CAST	.090	.060	THE INFORMATION HERE IS CONFIDENTIAL AND MUST NOT BE USED IN ANYWAY DETRIMENTAL TO THE INTEREST OF WOODBINE MFG.	
								TITLE		
								2"X35" REPLACEMENT CYL BARREL (25/30) RAIL		