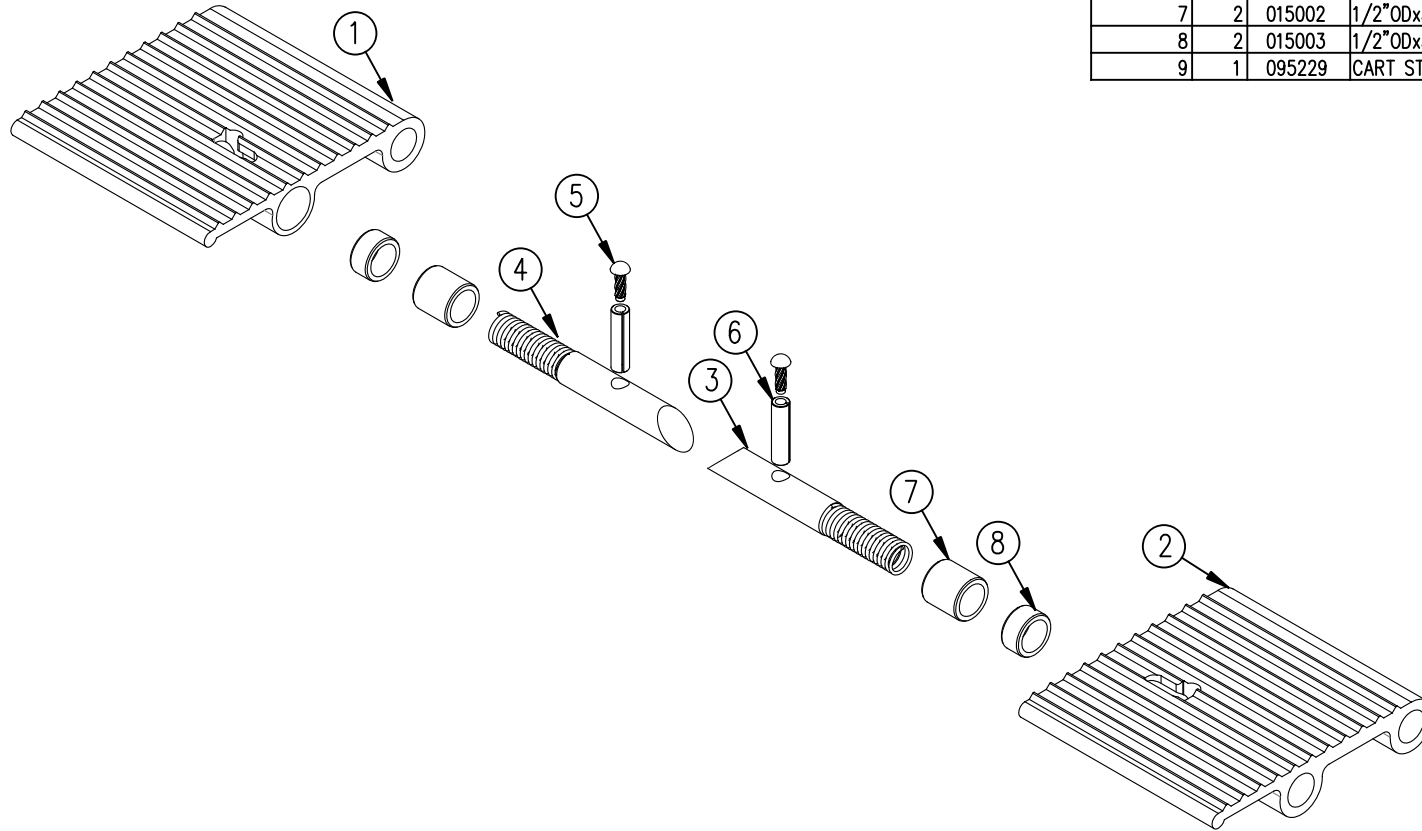



ITEM NO.	QTY.	PART NO.	DESCRIPTION
1	1	015007	FLIPPER ANCHOR 2.85" DR (CVL/RAIL)
2	1	015008	FLIPPER ANCHOR 2.85" PS (CVL/RAIL)
3	2	010360	CART STOP LATCH BOLT
4	2	010361	CART STOP COMPRESSION SPRING
5	2	011228	NAIL EASY DRIVE #4
6	2	010586	3/16"DIA.x3/4" ROLL PIN PLATED
7	2	015002	1/2"ODx3/8"IDx1/2" PLASTIC BUSHING
8	2	015003	1/2"ODx3/8"IDx1/4" PLASTIC BUSHING
9	1	095229	CART STOP LATCH REPLACEMENT INSTRUCTIONS



REV.	DATE	CHANGE RECORD	BY	APPVD	ECN	THIRD ANGLE PROJECTION	FILENAME:	SYMBOLY PER ANSI Y14.5	NOTES:	WOODBINE MFG. CO. BUS BROWN DRIVE WOODBINE, IOWA 51579		
C	5/5/17	ADDED (1) 15007, (1) 15008, (1) 10360, (1) 10361, (1) 11228, (1) 14466, (2) 15002, AND (2) 15003	GDB		1861	DECIMAL MACHINE SAW, DRILL		DRAWN BY. JCB		 THE INFORMATION HERE IS CONFIDENTIAL AND MUST NOT BE USED IN ANYWAY DETRIMENTAL TO THE INTEREST OF WOODBINE MFG.		
B	12/14/11	ADDED 11228, REMOVED "CANTILEVER" FROM TITLE	JAR		539	SHEAR, PUNCH FORM		DRAWN/DATE 7/27/11				
A	7/27/11	RELEASED TO PRODUCTION	JCB		450	TORCH, WELDING ROUGH CAST		APPVD/DATE	TITLE REPLACEMENT CART STOP LATCH KIT (CVL)			
						DRAFT 2"	ANGULAR ±1"	SALES CATEGORY	PRODUCT LINE		SCALE 1:1	FIN. WT.