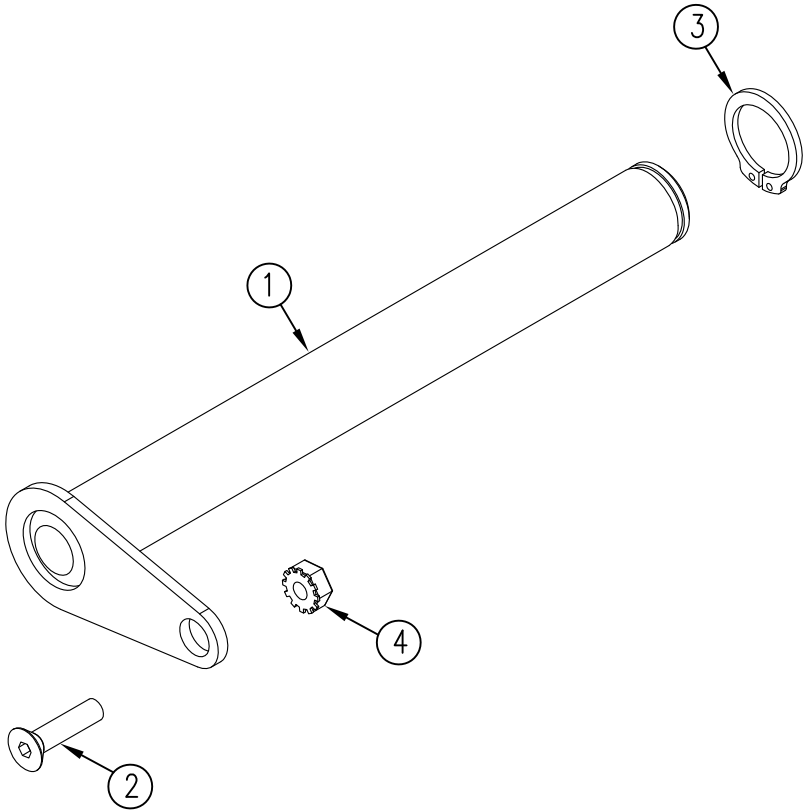


ITEM NO.	QTY.	PART NO.	DESCRIPTION
1	1	010328	CANTILEVER CYLINDER BASE PIN W/ KEEPER
2	1	011084	1/4-20x1" FLAT HEAD SOCKET CAP SCREW ZP
3	1	002026	7/8" EXTERNAL SNAP RING, PLATED
4	1	011081	1/4-20 KEPS NUT ZINC



						THIRD ANGLE PROJECTION	FILENAME:	WOODBINE MFG. CO.	
							SYMBOLY PER ANSI Y14.5	BUS BROWN DRIVE	
						DECIMAL	DRAWN BY: JCB	NOTES:	
					MACHINE SAW, DRILL	2PLC .030			712-647-2050
					SHEAR, PUNCH FORM	3PLC .015			
					TORCH, WELDING ROUGH CAST	.060 .030			THE INFORMATION HERE IS CONFIDENTIAL AND MUST NOT BE USED IN ANYWAY DETRIMENTAL TO THE INTEREST OF WOODBINE MFG.
A	6/29/11	RELEASED TO PRODUCTION	JCB		450	DRAFT 2"	DRAWN/DATE 6/29/11	7/8" REPL. CANTILEVER CYL. BASE PIN W/ KEEPER	
REV.	DATE	CHANGE RECORD	BY	APPVD	ECN	ANGULAR ±1°	APPVD/DATE	TITLE	
							SALES CATEGORY	PRODUCT LINE	
							SCALE	FIN. WT.	
							1:2	PART NO. 11266	