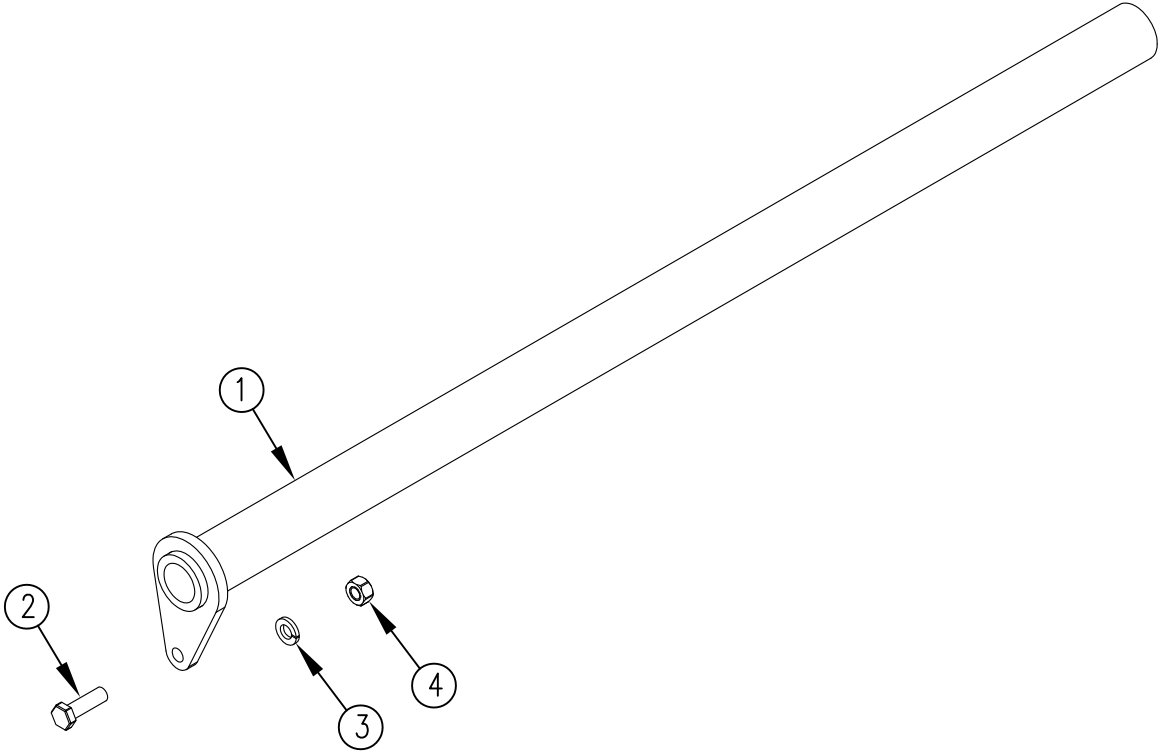


ITEM NO.	QTY.	PART NO.	DESCRIPTION
1	1	010023	CANTILEVER PLATFORM PIVOT PIN
2	1	010502	5/16-18X1" HHCS GR5
3	1	000584	5/16" SPRING LOCK WASHER
4	1	000554	5/16-18 GR5 NUT



						THIRD ANGLE PROJECTION	FILENAME:	WOODBINE MFG. CO.	
							SYMBOLY PER ANSI Y14.5	BUS BROWN DRIVE	
						DECIMAL	DRAWN BY: JCB	NOTES:	
					MACHINE SAW, DRILL	2PLC .030			WOODBINE, IOWA 51579
					SHEAR, PUNCH FORM	3PLC .015			712-647-2050
					TORCH, WELDING ROUGH CAST	.060 .030			
A	6/29/11	RELEASED TO PRODUCTION	JCB	450		.090 .060	DRAWN/DATE 6/29/11	THE INFORMATION HERE IS CONFIDENTIAL AND MUST NOT BE USED IN ANYWAY DETRIMENTAL TO THE INTEREST OF WOODBINE MFG.	
REV.	DATE	CHANGE RECORD	BY	APPVD	ECN	DRAFT 2'	APPVD/DATE	TITLE	
						ANGULAR ±1'	SALES CATEGORY	REPLACEMENT CANTILEVER PLATFORM PIVOT PIN	
							PRODUCT LINE	SCALE 1:4	
							FIN. WT.	PART NO. 11254	